

# POLYSCREEN®



B1 - Bs2d0  
Class 1 - Pass



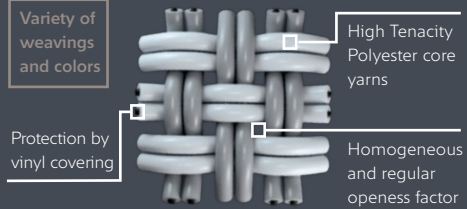
REACH ✓  
COMPLIANT

# POLYSCREEN® 350



## BANDALUX

# POLYSCREEN® 350



## CONFORT VISUAL, EFICACIA TÉRMICA Y GRAN TRANSPARENCIA

- Transparencia y visibilidad: 10% de apertura homogénea.
- Perfecta gestión de la luz para fachadas orientadas al norte.
- Filtrado de la luz muy eficaz: 86% de la luz bloqueada (TV = 11%).
- Tejido sostenible, respetuoso con la salud y el medio ambiente, 100% reciclable.
- Calidad del aire: inoloro, no desprende COV (certificado Greenguard Gold).
- Enrolle perfecto incluso para grandes dimensiones (ancho 250-300 cm).
- Resistencia a condiciones meteorológicas extremas (IMO) y al cloro.

## CONFORT VISUEL ET EFFICACITÉ THERMIQUE D'UN TEXTILE SEMI-TRANSPARENT

- Transparence et visibilité maximum : 10 % d'ouverture homogène.
- Parfaite gestion de la lumière pour les facades exposées Nord.
- Filtre lumineux très efficace : 89 % de la lumière stoppée (TV = 11 %).
- Tissu éco-conçu, respectueux de la santé et de l'environnement, 100 % recyclable.
- Qualité de l'air : sans odeur, il ne dégage pas de COV (certifié Greenguard Gold).
- Excellent enroulement même en grandes dimensions (largeur 250-300 cm).
- Résiste aux conditions météorologiques en milieu les plus extrêmes (IMO), résistance au chlore.

## VISUAL COMFORT, THERMAL EFFICIENCY AND EXCELLENT TRANSPARENCY

- Transparency and visibility: 10% degree of opening, throughout the entire shade.
- Perfect sunlight management for north-facing façades.
- Highly efficient sunlight filter: 86% of the light is blocked (TV = 11%).
- A sustainable, 100% recyclable, environmentally friendly and health-friendly fabric.
- Air quality: colorless, VOC emission free (Greenguard Gold certified).
- Perfect roll, even in large sizes (250-300 cm in width).
- Resistant to extreme climate conditions (IMO) and chlorine.

## COMFORT VISIVO, EFFICACIA TERMICA E GRANDE TRASPARENZA

- Trasparenza e visibilità: 10% di apertura omogenea.
- Perfetta gestione della luce per facciate orientate a nord.
- Filtraggio della luce molto efficace: 86% della luce bloccata (TV = 11%).
- Tessuto sostenibile, rispettoso della salute e dell'ambiente, 100% riciclabile.
- Qualità dell'aria: inodore, non rilascia COV (certificato Greengard Gold).
- Avvolgimento perfetto anche per grandi dimensioni (larghezza 250-300 cm).
- Resistenza a condizioni meteorologiche estreme (IMO) e al cloro.

### PROPERTIES



### MAINTENANCE



### CERTIFICATES

#### FABRICS CERTIFICATES



#### COMPANY & SYSTEMS CERTIFICATES

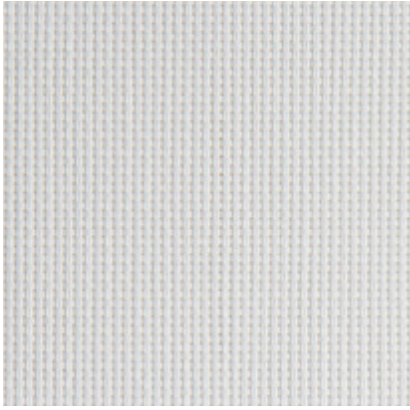


Contributing to Ecofriendly Building

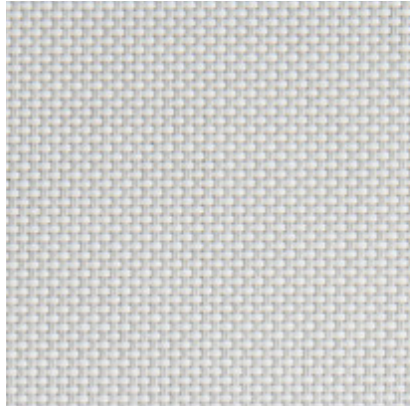


FIND MORE AT — [contract.bandalux.com](http://contract.bandalux.com)

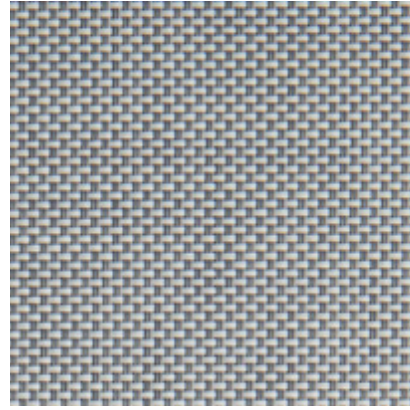




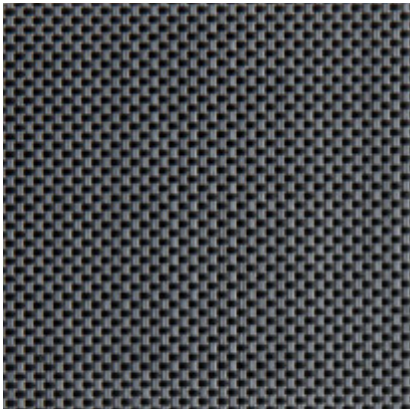
**White**  
Ref. 13002



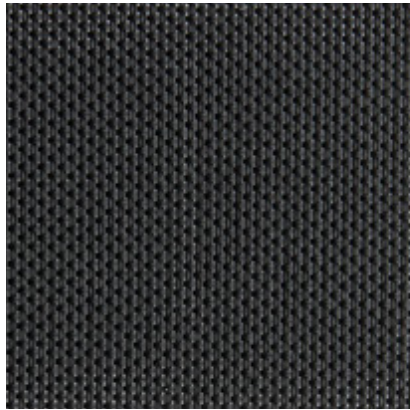
**White Pearl**  
Ref. 13027



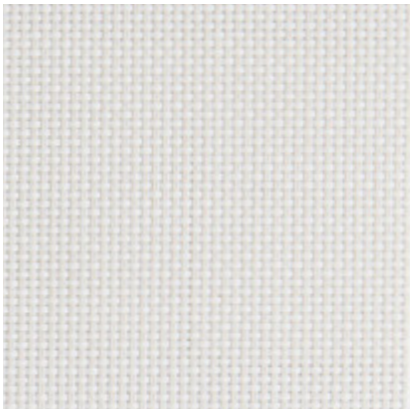
**Pearl Grey**  
Ref. 13071



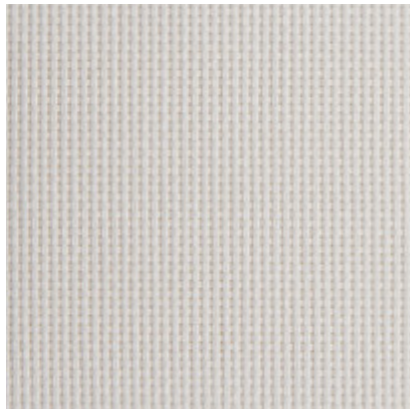
**Ash**  
Ref. 13099



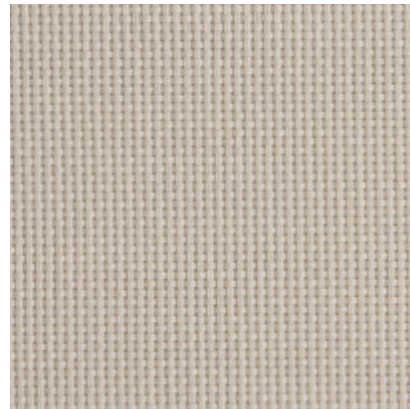
**Ebony**  
Ref. 13080



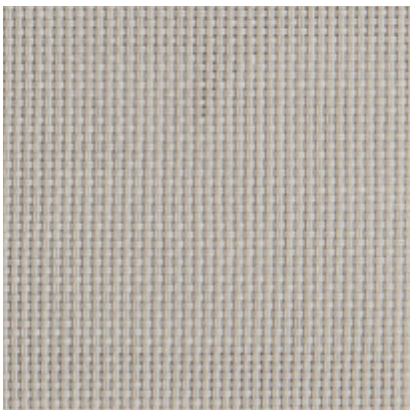
**White Linen**  
Ref. 13220



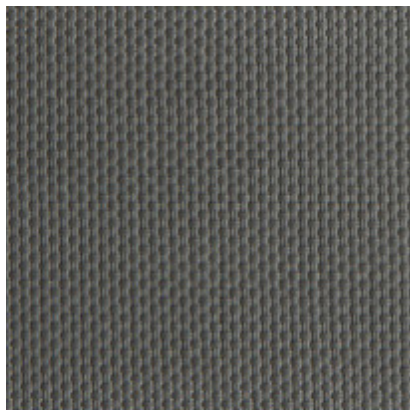
**Linen**  
Ref. 13020



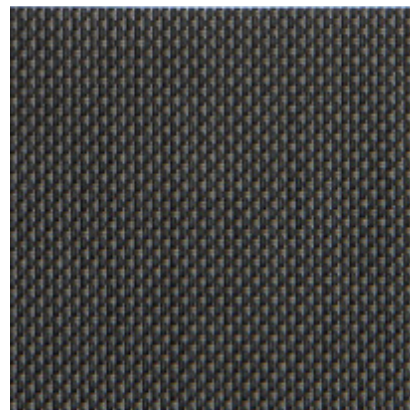
**Cinder**  
Ref. 13958



**Pebble**  
Ref. 13959



**Slate**  
Ref. 13957



**Tobacco**  
Ref. 13069



OF 10%

**POLYSCREEN® 350**

## TECHNICAL DATA

Composición / Composition / Composition / Composizione	v	75% PVC + 25% PES
Peso / Poids / Weight / Peso	EN 12127	400 g/m <sup>2</sup> - 11,80 oz/yd <sup>2</sup>
Espesor / Épaisseur / Thickness / Spessore	EN ISO 5084	0,53 mm - 0,021"
Ancho de rollo / Largeur rouleau Roll width / Larghezza del tessuto	-	250 cm - 98" / 300 cm - 118"
Grado de apertura / Coefficient d'ouverture Openess Factor / Grado di apertura (%)	-	10%
Resistencia al fuego / Classement feu Fire classification / Resistenza al fuoco	DIN 4102 EN 13501-1 EN 13773 NFPA 701 - CAN/ULC-S109-3	B1 Bs2d0 Class 1 Pass
Wheelmark	IMO Res.MSC.307(88)-(2010 FTP Code) IMO MSC/Circ. 1102	Pass
Resistencia al desgarro / Résistance à la déchirure Tear resistance / Resistenza alla trazione (daN)	EN ISO 13937-3	4,9 daN - 4,7 daN
Resistencia a la ruptura / Résistance rupture Tensile strength / Resistenza alla rottura (daN/5cm)	EN ISO 13934-1	153 daN - 136 daN
Resistencia a la luz / Résistance à la lumière Light Fastness / Resistenza alla luce (Grey Scale)	EN ISO 105 B06 (interior) EN ISO 105 B03 (exterior) EN ISO 105 B04 (exterior) EN ISO 4892-2 (exterior)	5/5 4/5 White
Resistencia a la luz / Résistance à la lumière Light Fastness / Resistenza alla luce (Blue Scale)	EN ISO 105 B02 (interior)	8/8 7/8 White
Test de olores / Test d'odeur / Odour test / Test degli odori	PV-3900	3 Pass
Resistencia en ambientes salinos Résistance aux environnements salins Durability in saline environment Resistenza in ambienti salini	EN ISO 112-017:92 ISO 9227:90	Sin cambios en la superficie (max.nivel) Aucun changement en surface (niveau max.) Whitout changes in surface (max. level) Senza cambi in superficie (niveolo mass)
Actividad antimicrobiana / Activité antibacterienne Antimicrobial activity / Attività antimicrobica	ASTM 2180-01	Inhibe la proliferación de bacterias Pas de prolifération de bactérie Microorganism growth inhibition Impedisce la proliferazione dei batteri
Material reciclado / Matériaux recyclés Recycled material / Materiali riciclati	-	2% Pre-consumer
Imprimible / Imprimable Printable / Stampabile	-	Sí / Oui Yes / Sì

## THERMAL FACTORS

## OPTICAL FACTORS

Ref.	Colors	ENS2022-1 (Standard C and D)				EN410 - EN14500 - EN14501										
		% Ts	% Rs	% As	G <sub>TOT</sub> int Glazing C		G <sub>TOT</sub> int Glazing D		% Tv	% Rv	% Tv,n-n	% Tv,n-diff	Glare Control Class	Night Privacy Class	Visual Contact Class	Daylight Utilisation Class
					G <sub>TOT</sub>	CLASS	G <sub>TOT</sub>	CLASS								
13099	Ash	10	8	82	0,49	1	0,28	2	10	9	9	1	1	1	3	2
13958	Cinder	21	38	41	0,41	1	0,26	2	17	41	11	6	0	0	3	2
13080	Ebony	11	3	86	0,56	0	0,31	2	11	3	10,5	0,5	0	0	4	2
13020	Linen	28	52	20	0,37	1	0,25	2	24	59	10	14	0	1	2	2
13071	Pearl Grey	16	26	58	0,44	1	0,26	2	14	29	11	3	0	0	4	2
13959	Pebble	17	31	52	0,47	1	0,28	2	14	33	11	3	0	0	4	2
13957	Slate	12	12	76	0,48	1	0,27	2	12	13	11	1	0	0	4	1
13069	Tobacco	11	5	84	0,50	0	0,28	2	11	5	10,5	0,5	0	0	4	2
13002	White	25	64	11	0,36	2	0,25	2	22	73	10	12	0	1	2	2
13220	White Linen	27	58	15	0,38	1	0,26	2	23	67	10	13	0	1	2	2
13027	White Pearl	23	54	23	0,40	1	0,26	2	19	60	10	9	0	1	2	2

The technical data above are average values with a +/- 5% tolerance. The values quoted above represent results of standards and internal tests performed and are provided for information only to enable to make the best use of our products. To ensure warranty effectiveness, refer to warranty certificate concerned available on demand. Our products are subjects to technical evolutions, we remain entitled to modify the characteristics of our products at any time. The buyer of our products is responsible for checking the validity of the above data.